



Glasgow
City Centre
living

Almandine APARTMENTS

FINAL PHASE OF CHIC & MODERN
CITY CENTRE 1 BED APARTMENTS

GLASGOW

ogilvie
HOMES

www.ogilviehomes.co.uk

Glasgow

Almandine APARTMENTS Development



The Area

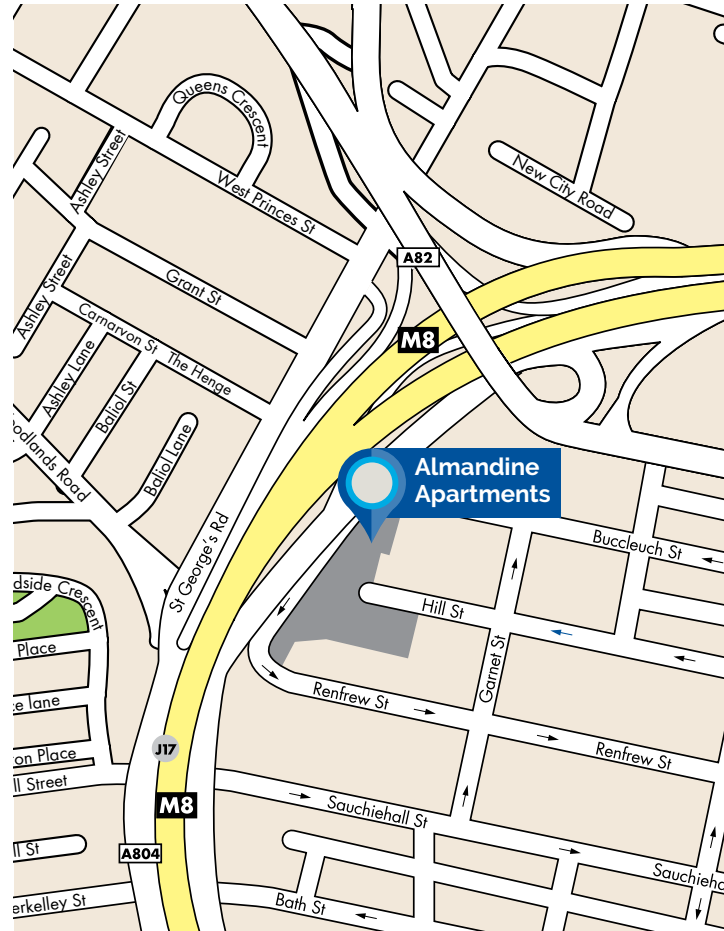
Almandine Apartments is located in the heart of Glasgow's city centre, in the historical district of Garnethill – a thriving area with some of the most impressive architecture in the city including Glasgow School of Art and St. Aloysius' College.

Garnethill is situated next to Sauchiehall Street, one of the most famous shopping streets in Glasgow, housing all the main high street brands such as Marks & Spencer, Boots, TK Maxx, Superdrug etc., as well as many of the city's top quality restaurants and bars.

Glasgow is an exciting, bustling city, renowned for being one of the best shopping locations in the UK and second only to London for fashion and trend-setting. As well as the vast array of visitor attractions throughout the city and surrounding areas, Glasgow is also home to some of the most reputable universities and colleges throughout the country.

Almandine Apartments is the ideal location for city living with easy access to major motorways, key bus routes and railway links.

SAT NAV Ref: G3 6UQ










Glasgow Almandine APARTMENTS Development

Site Map

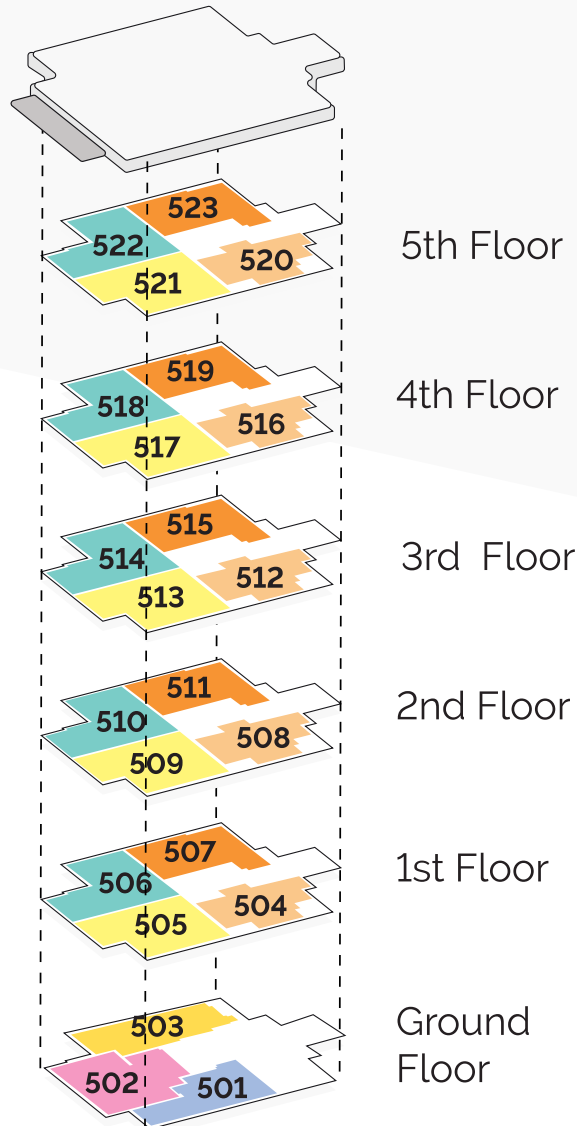
It's important to see where your new home is positioned in the development and this map will show you both the plot and locality within the surroundings.

1 Bedroom Flats

-  Flat Type H
Ground Floor Flat
-  Flat Type I
Ground Floor Flat
-  Flat Type J
Ground Floor Flat
-  Flat Type K
Upper Floor Flat
-  Flat Type L
Upper Floor Flat
-  Flat Type M
Upper Floor Flat
-  Flat Type N
Upper Floor Flat

Plots not yet under construction may be subject to change and local authority approval. Images are for reference only. Materials may vary due to statutory authority requirements. Our policy is one of continual improvement and whilst every care has been taken with the accuracy of this brochure certain details may have changed since printing. Please check the technical specification with our Sales Manager as the details herein do not constitute a part of any contract nor do they constitute an offer.

BLOCK 5

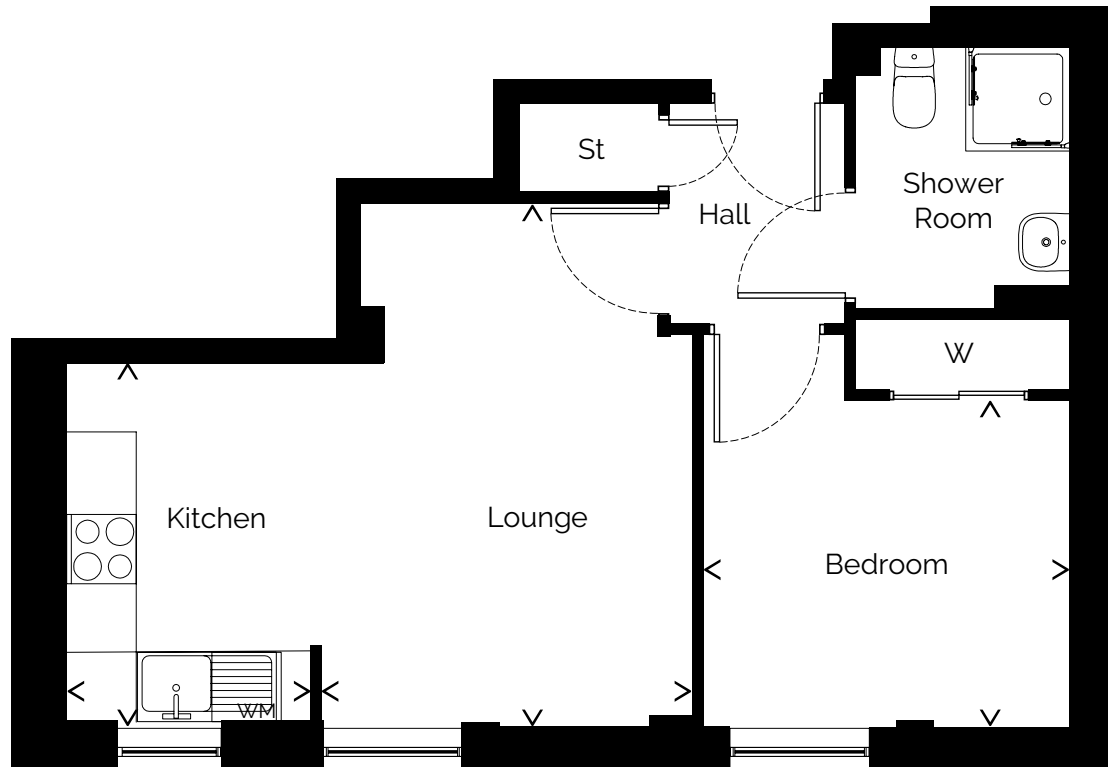




Flat Type I

1 Bedroom Flat

Glasgow
Almandine
APARTMENTS



Ground Floor Flat

- Lounge:
4.54m x 3.20m 14.89ft x 10.50ft
- Kitchen:
2.10m x 3.10m 6.89ft x 10.17ft
- Bedroom:
2.82m x 3.16m 9.25ft x 10.37ft

House type colours and specifications may vary from those illustrated.

Room measurements given are approximate only. Floor plans, dimensions and specifications on any particular development are correct at time of going to press. Nothing contained in this brochure shall constitute or form any part of any contract. All dimensions are +/- 50mm.

ogilvie
HOMES



Flat Type J

1 Bedroom Flat

Glasgow
Almandine
APARTMENTS



Ground Floor Flat

- Lounge:
4.42m x 3.48m 14.50ft x 11.42ft
- Kitchen:
3.02m x 2.65m 9.91ft x 8.69ft
- Bedroom:
2.78m x 3.26m 9.12ft x 10.69ft

House type colours and specifications may vary from those illustrated.

Room measurements given are approximate only. Floor plans, dimensions and specifications on any particular development are correct at time of going to press. Nothing contained in this brochure shall constitute or form any part of any contract. All dimensions are +/- 50mm.

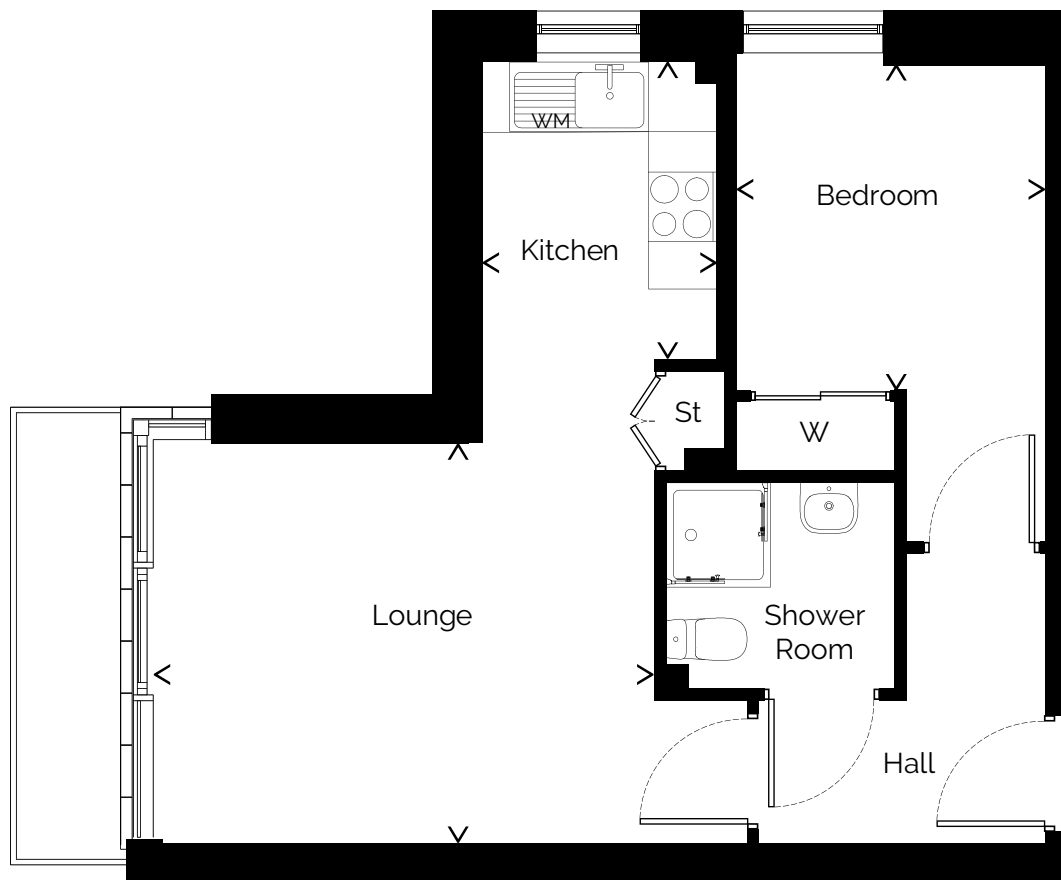
ogilvie
HOMES



Flat Type K

1 Bedroom Flat

Glasgow
Almandine
APARTMENTS



Upper Floor Flat

- Lounge:
4.30m x 3.47m 14.11ft x 11.38ft
- Kitchen:
2.06m x 2.60m 6.76ft x 8.53ft
- Bedroom:
2.67m x 2.80m 8.76ft x 9.18ft

House type colours and specifications may vary from those illustrated.

Room measurements given are approximate only. Floor plans, dimensions and specifications on any particular development are correct at time of going to press. Nothing contained in this brochure shall constitute or form any part of any contract. All dimensions are +/- 50mm.

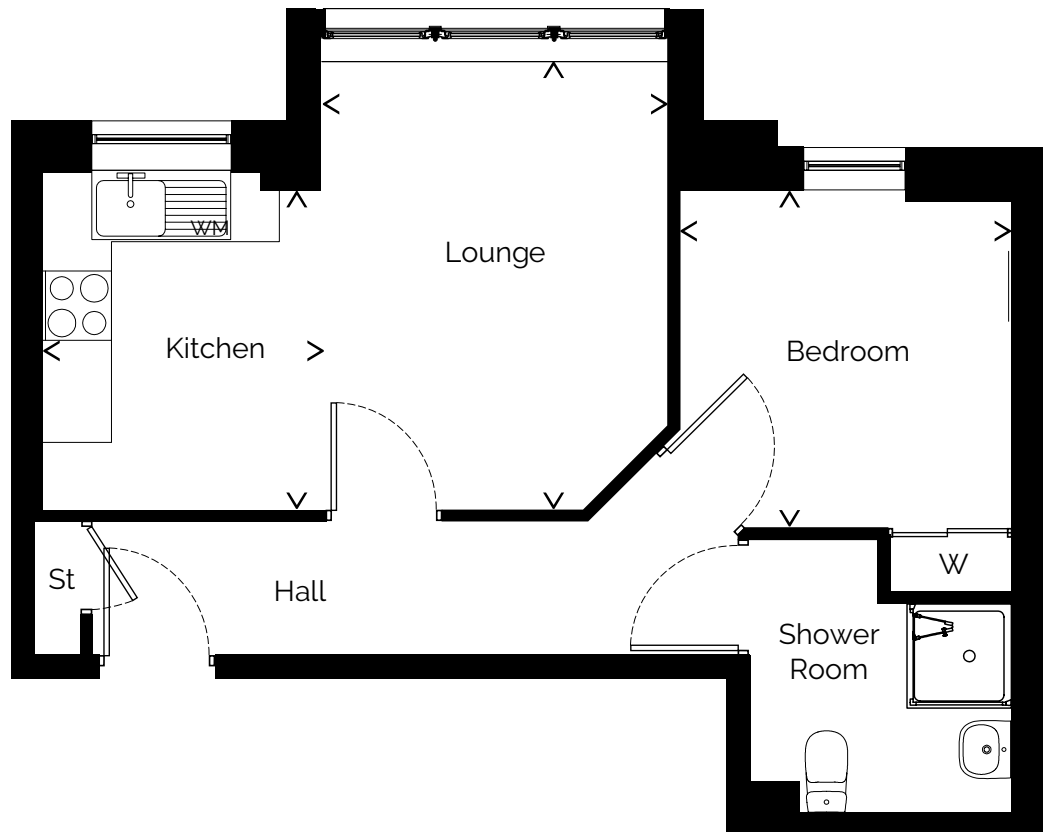
ogilvie
HOMES



Flat Type L

1 Bedroom Flat

Glasgow
Almandine
APARTMENTS



Upper Floor Flat

- Lounge:
3.00m x 3.87m 9.84ft x 12.70ft
- Kitchen:
2.40m x 2.77m 7.87ft x 9.09ft
- Bedroom:
2.86m x 2.92m 9.38ft x 9.58ft

House type colours and specifications may vary from those illustrated.

Room measurements given are approximate only. Floor plans, dimensions and specifications on any particular development are correct at time of going to press. Nothing contained in this brochure shall constitute or form any part of any contract. All dimensions are +/- 50mm.

ogilvie
HOMES

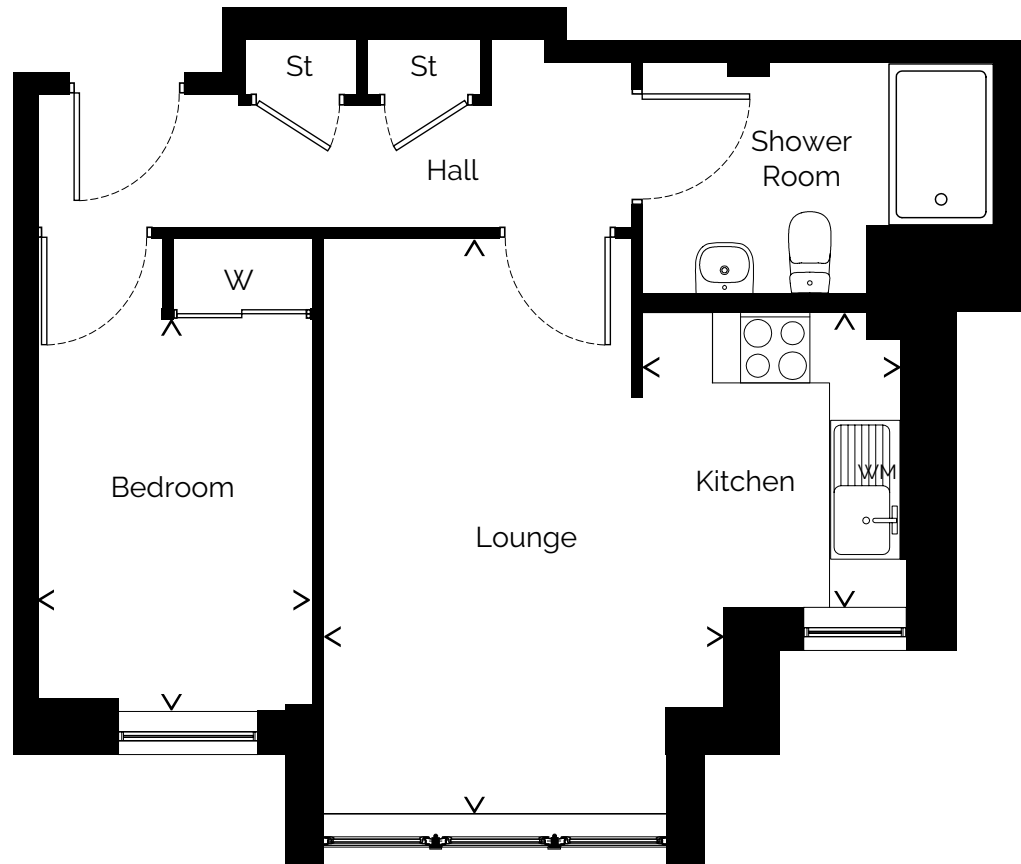
www.ogilviehomes.co.uk



Flat Type M

1 Bedroom Flat

Glasgow
Almandine
APARTMENTS



Upper Floor Flat

- Lounge:
4.97m x 3.48m 16.30ft x 11.42ft
- Kitchen:
2.54m x 2.24m 8.33ft x 7.35ft
- Bedroom:
2.36m x 3.38m 7.74ft x 11.09ft

House type colours and specifications may vary from those illustrated.

Room measurements given are approximate only. Floor plans, dimensions and specifications on any particular development are correct at time of going to press. Nothing contained in this brochure shall constitute or form any part of any contract. All dimensions are +/- 50mm.

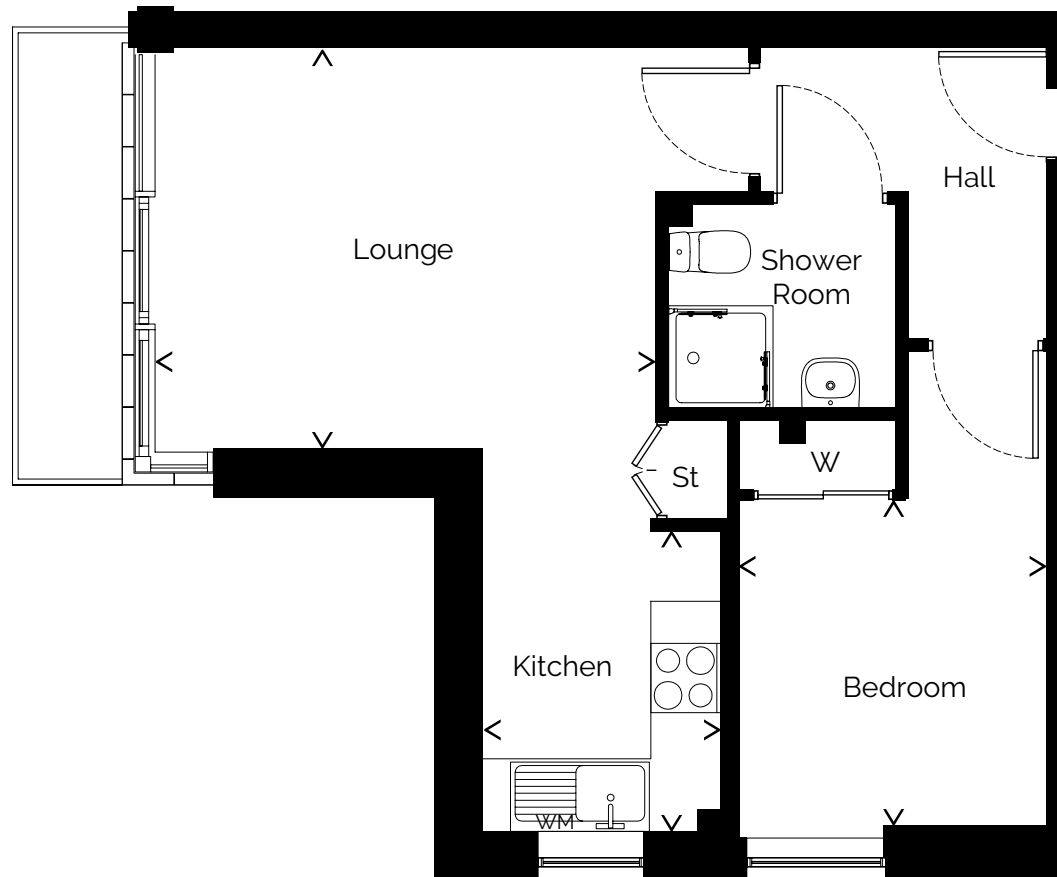
ogilvie
HOMES



Flat Type N

1 Bedroom Flat

Glasgow
Almandine
APARTMENTS



Upper Floor Flat

- Lounge:
4.30m x 3.47m 14.11ft x 11.38ft
- Kitchen:
2.06m x 2.60m 6.76ft x 8.53ft
- Bedroom:
2.67m x 2.80m 8.76ft x 9.18ft

House type colours and specifications may vary from those illustrated.

Room measurements given are approximate only. Floor plans, dimensions and specifications on any particular development are correct at time of going to press. Nothing contained in this brochure shall constitute or form any part of any contract. All dimensions are +/- 50mm.

ogilvie
HOMES

Glasgow

Almandine APARTMENTS Development



SPECIFICATIONS

General

- Gas central heating system
- Thermostatically controlled radiators
- UPVC double glazed windows
- Two-panel white internal doors
- Brushed chrome ironmongery throughout
- 10 year warranty body cover

Electrical

- TV points to lounge and bedroom where applicable
- Telephone point in lounge (duct and outlet points only) & bedroom where applicable
- Mains power smoke detector & heat detector
- Additional BT point in lounge next to TV point for future installation of satellite
- Cabling for Sky

Kitchen

- Kitchen choice from wide range available
- Stainless steel electric oven
- Stainless steel splashback cover
- Gas hob and chimney hood
- Integrated washer dryer
- Single stainless steel sink with chrome fittings

Shower Room

- White sanitary ware
- Chrome taps
- Shaver point
- Thermostatic shower

External

- Secure door entry system
- Communal landscaped areas to be maintained by an external factor. This will be a factored development.

This specification is for guidance only although every care has been taken to ensure the accuracy of all information: the contents of the specification do not form part of or constitute representation warranty or part of any contract. The company reserve the right to amend and/or update specification at their discretion.

To enquire about flat type specifications, factoring details or a full list of available site specific upgrade options, please contact our Sales Advisors on 0141 332 1287 or 01786 811811 (Head Office).

Images are for reference only. Materials may vary due to statutory authority requirements. Our policy is one of continued improvement and whilst every care has been taken with the accuracy of this brochure certain details may have changed since printing.

Please check the technical specification with our Sales Manager as the details herein do not constitute a part of any contract nor do they constitute an offer.

Ogilvie Homes comply with the standards of good practice, procedures and information as determined by the Consumer Code for Home Builders (01/04/10). For more information please visit www.consumercodeforhomebuilder.com

